

Automotive Aftermarket

**Continental**   
The Future in Motion

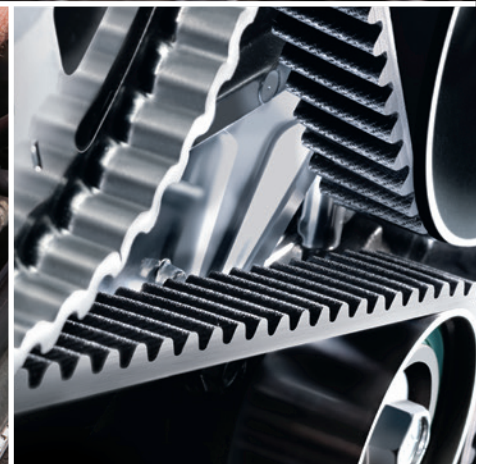
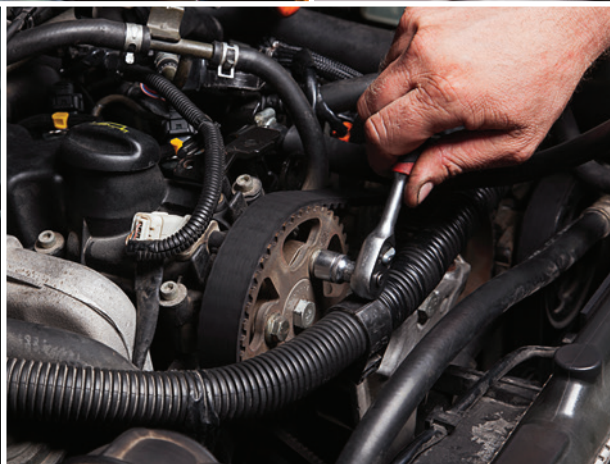
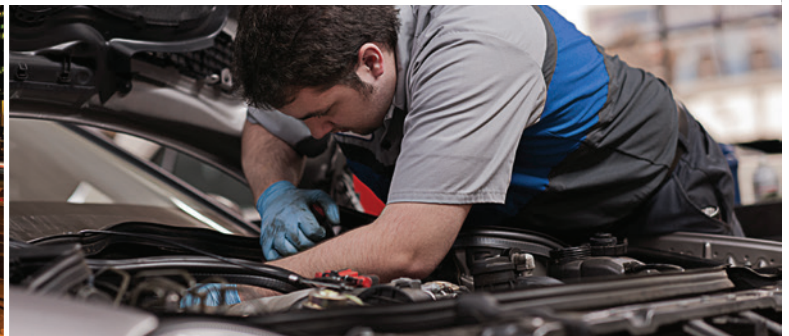
## Aftermarket Products with the OE Pedigree

*We Know OE, Because We Are OE.*

# CONTINENTAL LEADERSHIP

**Continental is a world leader in industrial rubber and plastic products and has the largest global footprint of any rubber products manufacturer.** Our knowledge and expertise allow us to deliver the most innovative and highest quality OE and aftermarket products to the automotive market. Plus, our extensive problem-solving experience across multiple industries and applications enables us to share innovations over our entire product offering. Which means we can deliver unexpected solutions and advanced improvements in situations where others can't. We push the boundaries of what's possible, and we're constantly solving tomorrow's most challenging problems – today and every day.

*Learn more about our innovative history at [www.continental-corporation.com/en/company/history](http://www.continental-corporation.com/en/company/history)*



# Continental Automotive Aftermarket

**WE KNOW OE, BECAUSE WE ARE OE.**

**For over 145 years, Continental has been a driving force as a major OE supplier to many of the world's leading domestic and import automobile manufacturers.**

As a leading provider of OE belts on vehicles worldwide, Continental is uniquely positioned to lead innovation in aftermarket products like Continental OE Technology Series Multi V-Belts. They're the belts engines already know, and they're precision engineered for perfect fit, form and function.

And, it's not just our belts - all of our aftermarket products are engineered to perform at OE levels, providing professional repair technicians with products they can install with confidence.



# Continental Belt Lineup

## THE BRAND WITH THE OE PEDIGREE.

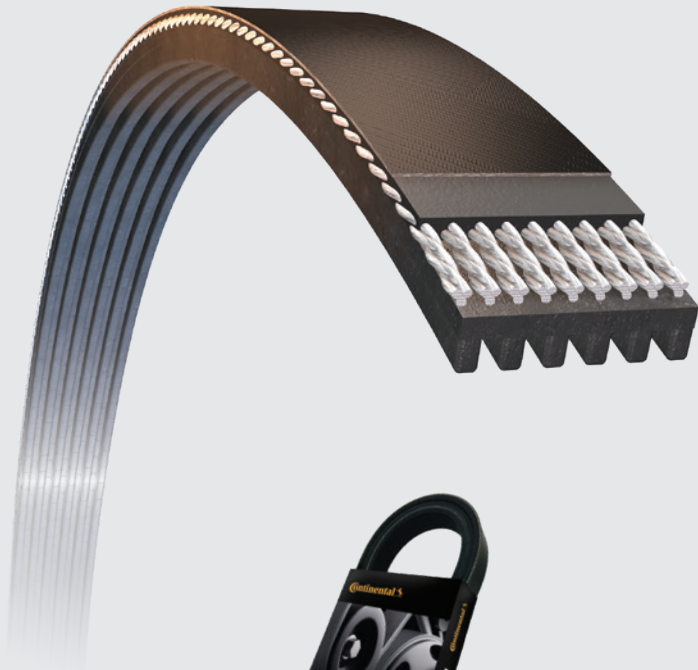
Continental knows OE because our belts are OE on millions of Chrysler, Dodge, Ford, GM, BMW and Volkswagen vehicles. Now with our OE Technology Series (OETS), you can install the aftermarket Multi V-Belt with the OE pedigree. Plus, there's a Continental belt for 98% of the vehicles on the road.

That same technological leadership can be found in the full line of Continental belts, including Stretch Belts, Heavy Duty Truck Belts, Powersports Belts and Lawn & Garden Belts.



### MULTI V-BELT

With advanced EPDM rubber compounds, Continental's Multi V-Belts virtually eliminate the chirps, squeaks and squeals typically associated with pulley misalignment. The polyester tension member is specially treated to reduce elongation and is very compatible with the automatic tensioners used in today's belt drive systems. Advanced technologies allow for increased flexibility and abrasion and heat resistance.



### V-BELT



Continental V-Belts provide higher heat and abrasion resistance in even the toughest under-hood conditions. The result is greater wear resistance for an exceptional belt life. A polyester tensile member improves dimensional stability, controlling elongation and limiting belt slip.

### EXTREME HD BELT



The Extreme Belt is specifically designed for heavy-duty truck applications with extreme temperature buildup (hot and cold) that require additional abrasion resistance. Our advanced EPDM polymers resist cracking and heat buildup, which improves flex life and reduces wear.

### STRETCH BELT



Our Stretch Belts, with self-tensioning technology, are built specifically for drives that don't have a mechanical tensioner to maintain constant belt tension or an adjustment slot that allows for belt installation or tensioning. Our distinctive design uses the latest OEM technology in EPDM compounds, and a polyamide tensile cord that stretches for installation, then recovers once installed to maintain proper tension.

### INSTA POWER® LAWN & GARDEN BELT



Insta Power belts are built for strength and endurance. Every element of the belt is designed to deliver premium, long-life performance in demanding outdoor power equipment service. It's engineered to withstand the abuse of repeated sudden shock loads, tolerate high ambient temperatures and resist the damaging effects of dust.

### POWERSPORTS BELT



A unique compound containing Carbon Fiber creates transverse rigidity in the belt, offering an abrasion-resistant sidewall for maximum belt life under adverse conditions. A patented aramid cord minimizes stretch, creating a belt with stable length under load. This gives our Powersports belts the dimensional stability to carry horsepower while maintaining less stretch over the life of the belt.

# Continental Tensioners & Pulleys

## **BELT TENSIONERS WITH ACCU-DRIVE® TECHNOLOGY.**

Not all brands of automatic tensioners and pulleys are created equal.  
For an OE-specific replacement part, trust belt tensioners with Accu-Drive® Technology.

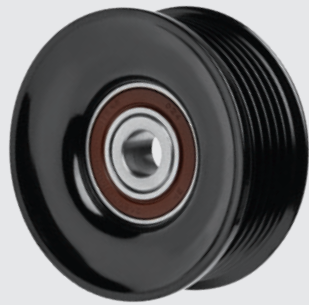


### **WHY CONTINENTAL BELT TENSIONERS?**

- › *Maintains correct alignment to the belt*
- › *Automatically sustains precise accessory belt tension*
- › *Automatically dampens normal accessory system vibrations*
- › *Prevents belt slip and excessive belt wear*
- › *Optimizes belt and accessory system component life*
- › *Provides an indication of belt stretch and need for replacement*
- › *Improves belt system alignment*

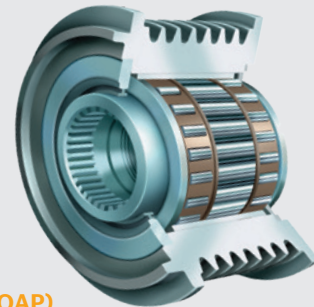
# Continental Alternator Pulleys

**LEARN THE DIFFERENCE BETWEEN THE THREE TYPES OF ALTERNATOR PULLEYS ON THE MARKET TODAY.**



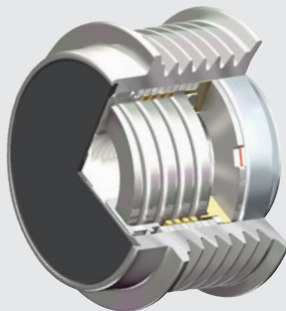
## **STANDARD PULLEY**

Designed to drive the alternator.



## **OVERRUNNING ALTERNATOR PULLEY (OAP)**

Designed internally with a one-way clutch, the OAP allows the inside of the alternator to coast to a stop when the engine is shut off. The overrun feature is what eliminates belt chirp noises during engine shutdown and transmission shifting.



## **OVERRUNNING ALTERNATOR DECOUPLER (OAD)**

Designed internally with a one-way clutch, the OAD also has an internal torsional steel spring that absorbs engine vibration. This technology allows the belt to run calmly and smoothly.

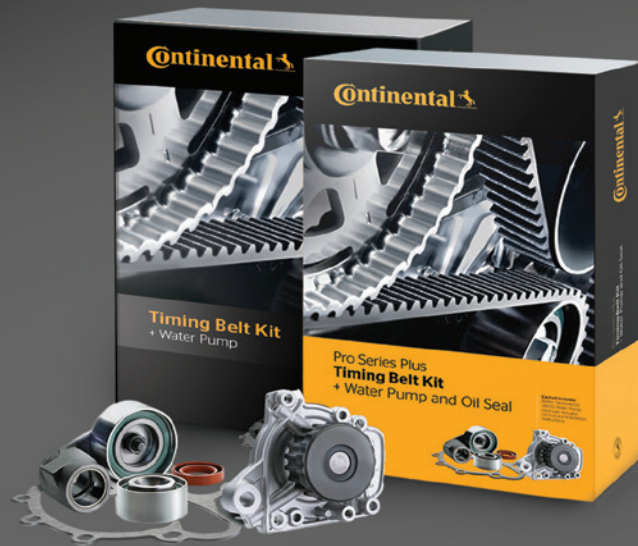
# Continental Timing Belt Kits

## **FOUR DIFFERENT TIMING BELT KIT OPTIONS.**

Because we are an industry leader in the timing kit category, our knowledge of automotive aftermarket parts allows us to set new standards by providing consumer confidence - high-performance products that are reliable, low-maintenance and economical.

With four timing belt kit options, we offer customized solutions for the market. We have import and domestic kits for early and late model vehicles that cover every vehicle make and model in North America. Our relentless commitment to product development means Continental timing belts and components meet or exceed OE fit, form and function, which means fewer callbacks for professional repair technicians.

Continental's Best-in-Class Guarantee Program is our commitment to you and your customers!







### **TIMING BELT KIT**

This kit is designed for vehicles that are approaching the end of their life cycle. Our standard kit is the tool professional repair technicians need to save customers money and gain their trust.



### **TIMING BELT KIT WITH WATER PUMP**

This kit is an economical alternative for consumers with early model vehicles at the end of their life cycle. It provides the quality professional repair technicians need at a competitive price.



### **PRO SERIES TIMING BELT KIT WITH WATER PUMP**

This kit is one of our premier kits that offers a best-in-class guarantee for all consumers. Because of its high level of quality OE components, it is considered a dealer alternative.




### **PRO SERIES PLUS TIMING BELT KIT WITH WATER PUMP & OIL SEALS**

When your customers expect the best, offer the Pro Series Plus Kit. Developed with quality OE components, this kit includes seals and a best-in-class guarantee for all consumers, and it is considered a dealer alternative.

# Continental Hose

**DESIGNED TO OE SPECIFICATIONS.**



Continental's molded hose is pre-shaped for specific applications and constructed to original equipment manufacturer's configurations and specifications. The molded hose allows for ease of installation and full flow through tight bends. It also relieves stress on radiator connections. The tube and cover are made with EPDM rubber and are designed to resist heat, ozone and electrochemical degradation. The hose meets or exceeds SAE J20R4EC D1 and J20R3EC D1 specifications.



### **MOLDED RADIATOR HOSE**

Continental's molded radiator hose is designed to specific original equipment configurations for upper and lower radiator hose. It is resistant to electrochemical degradation (ECD) and compatible with most coolants, including ethylene glycol, propylene glycol-based coolants, as well as organic acid modified, long-life coolants. The hose is manufactured to SAE 20R4EC Class D1 specifications.



### **MOLDED HEATER AND BY-PASS HOSE**

Continental's molded heater and by-pass hose is designed to specific original equipment configurations for feed and return heater hose, as well as other small ID hose that complete the coolant system. The hose is resistant to the same coolant environment as radiator hose and is manufactured to SAE 20R3EC D1 and D2 specifications.



### **INTERSECT RADIATOR HOSE**

With its OE factory design connections, Continental's intersect radiator hose is molded to specific original equipment configurations and is manufactured to replace OE performance and fit. Included in the line are metal and nylon connectors, as well as high-quality, stainless steel clamps for leak-proof connections. The hose is manufactured to SAE 20R3EC D1 and SAE 20R4EC D1 specifications.



### **FLEXIBLE RADIATOR HOSE**

Continental's flexible radiator hose is designed for hose applications where a molded hose is not available. Flexible radiator hose has a corrugated cover that easily bends to replicate the original equipment coolant hose. The hose maintains full flow and resists collapse with a wire insert. It meets SAE J20R5 D1 specifications and is designed to be used with most coolants.



### UNIVERSAL 90° MOLDED HEATER HOSE

Universal 90° molded heater hose is available for applications where an exact fit molded heater hose is not available or where a 90° form is required. With a combination of a Universal 90° hose, heater hose connectors, clamps and E-Z Coil™, an exact fit hose may be closely replicated to function with the proper flow and routing.



### UNIVERSAL STRAIGHT DUAL ID MOLDED HEATER HOSE

Universal Straight Dual ID molded heater hose can be used in applications requiring a change in diameter. Dual ID heater hose is manufactured to SAE 20R3EC D1 specifications and has the same noted features of the Universal 90° molded heater hose. Universal Straight Dual ID molded heater hose can be combined with the Universal 90° molded heater hose to create additional hose shapes for proper routing.



### UNIVERSAL STRAIGHT RADIATOR HOSE

Universal Straight Radiator Hose can be used in applications requiring a short segment of radiator hose. The hose is manufactured to SAE 20R4EC Class D1 specifications and can be cut to any desired length.

## INVENTORY-REDUCING UNIVERSAL HEATER HOSE

It's almost impossible to stock all the sizes and shapes of molded heater hose that are installed on today's cars and trucks. Continental makes it easy (and profitable) to minimize the headaches with our new line of universal heater hose. Simply select two shapes that match the original hose, join them together and you have a hose that is as good as the original, if not better.



OE Configuration



Kit Parts

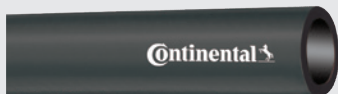


Assembled Kit



### BLUE HEATER HOSE

Designed for heater hose applications that are exposed to higher underhood temperatures and require a higher heat resistance.



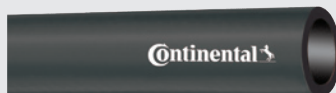
### SAE BLACK HEATER HOSE

Designed for heater hose applications where an OEM or SAE specification is required. SAE Black Heater Hose is certified to meet or exceed all the hose and material testing requirements of SAE 20R3-D2 with good resistance to heat and compatibility with all common engine coolants.



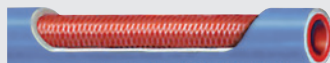
### HY-T® RED HEATER HOSE

Designed for heater hose applications with resistance to high underhood temperatures.



### HY-T® BLACK HEATER HOSE

Designed for heater hose applications where resistance to antifreeze coolants and underhood temperatures is required.



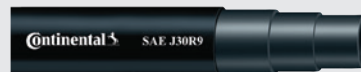
### SILICONE HEATER HOSE

Silicone heater hose is used for coolant transfer applications and higher temperature service.



### FUEL LINE / PCV / EMISSION CONTROL HOSE SAE J30R7

A multipurpose fuel hose that can be used as a fuel line, PCV connection, emission control line or fuel return line.



### FUEL INJECTION HOSE SAE J30R9

Designed specifically for auto and truck fuel injection systems. Continental SAE J30R9 is CARB approved (Q-10-004) with a maximum fuel permeation of 15g/m<sup>2</sup>/day at 104°F (40°C) and certified to EPA EVTIPLINE110-001.



### WINDSHIELD WIPER / RADIATOR OVERFLOW TUBING

Tubing that is designed to be used on windshield wiper systems, windshield washer fluid tanks, wet arm wiper tubing, radiator overflow tanks and vacuum tubing.

# Continental Tools

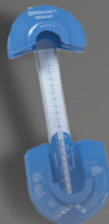
## SHOP SOLUTIONS.

Continental offers a catalog of tools that provide solutions for the shop and simplify product installation.

Tools like our easy-to-use gauge tell you and your customers when it's time to replace a belt.  
See video of the belt gauge in action:  
<https://www.youtube.com/watch?v=0emTmeDGllk>



Serpentine  
Belt Tool



Insta-Find Belt  
Measuring Guide



OAD & OAP  
Toolkit



Hose Cutting Tools



Hose Merchandiser



## Partfinder

**WE MAKE SEARCHING FOR THE BEST PARTS FASTER & EASIER.**

Professional repair technicians are always looking for parts that deliver the highest quality standards. That is where Continental's Partfinder can help technicians select automotive aftermarket replacement parts that meet those standards! Partfinder is an industry standout that offers features to find the exact parts for a specific car or light truck.

- › License plate lookup
- › VIN lookup
- › Search applications by part number
- › Competitive cross reference
- › Buyer's guide
- › Parts attributes

## DataDrive

**WHERE INNOVATION AND OPPORTUNITY MERGE.**



Your Continental Sales Representative can quickly access each of these key categories using DataDrive's easy-to-use dashboard web interface.

DataDrive Market Intelligence System is the first system of its kind that puts critical market information right at your fingertips.

Driven by integrating over one billion vehicle, application and proprietary market data records, DataDrive is designed to give your business the competitive edge by helping you anticipate needs and prepare for future trends. By coupling market data from trusted resources with Continental algorithms, DataDrive will help improve these three categories of your business:

- › Inventory optimization
- › Market assessment and profile reports
- › Lead generation

## Power Transmission Group

Market segment

Automotive Aftermarket

Contact

Continental

703 S. Cleveland Massillon Road

Fairlawn, OH 44333-3023 U.S.A.

1-800-869-0435

Canada

(French Only)

1-888-275-4397

Mexico

(Within Mexico)

01-800-439-7373

Mexico

(Outside Mexico)

+52-444-834-5803

**Continental**   
The Future in Motion

The content of this publication is not legally binding and is provided as information only. The trademarks displayed in this publication are the property of Continental AG and/or its affiliates. Copyright © 2019 ContiTech AG. All rights reserved. For complete information go to: [www.contitech.de/disc/en](http://www.contitech.de/disc/en)

21058201-5/19